



Tagpilot

Silverstroke



- **Simplify your business**
through automatization
- **See the big picture**
by modeling and analyzing dynamic
processes
- **Save money**
by using a single system to minimize
follow-up costs

Your software for Auto ID solutions



EUROPEAN
SATELLITE NAVIGATION
COMPETITION 2010
Bavaria Challenge
powered by

Silverstroke
Solutions you can rely on

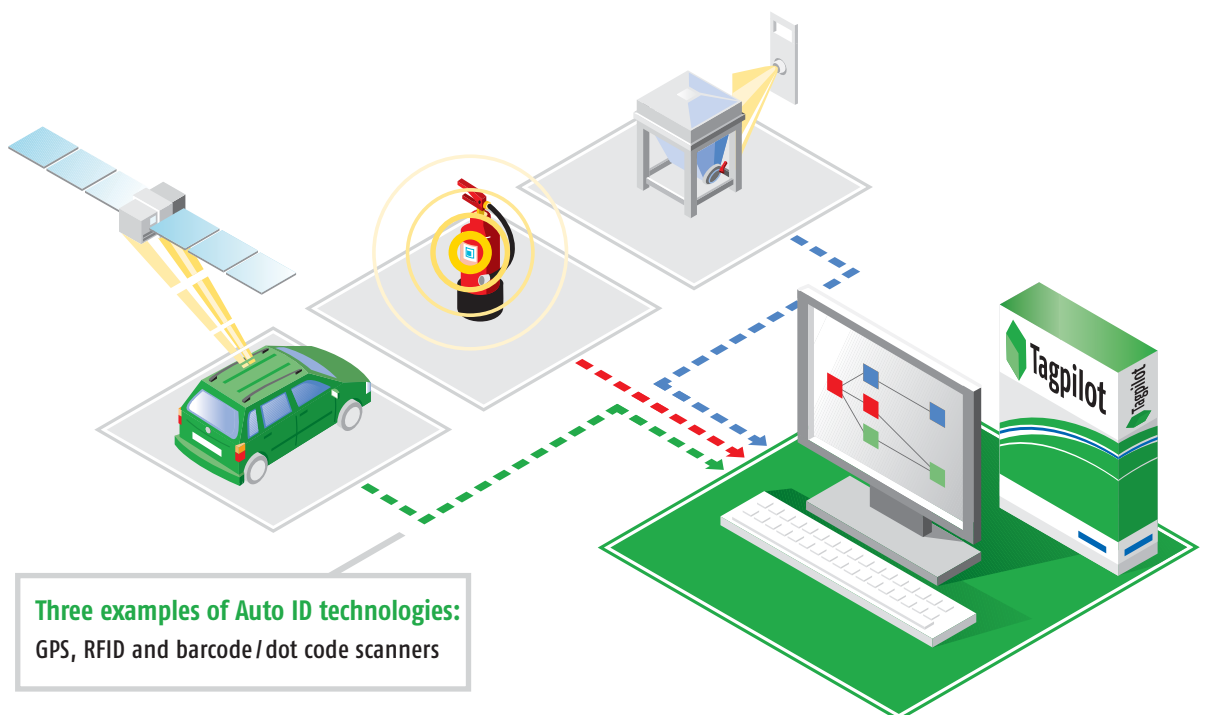
What is Tagpilot?

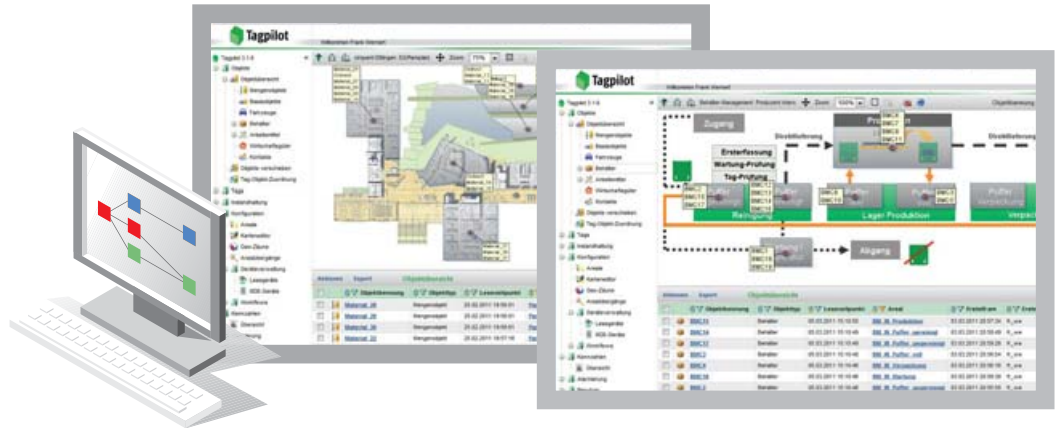
Tagpilot is the central software for capturing, processing and analyzing the movements of objects and changes in their status – which is known as “tracking & tracing”. Tracking stands for identifying an object’s current location, while tracing refers to its former positions and any changes in its condition, e.g. after having passed through a certain production or manufacturing process.

What is Auto ID?

“**Auto ID**” stands for “automatic identification”. And we mean “automatic” literally: Auto ID technologies like RFID make certain that the most recent changes in an object’s status and location are captured by readers and transferred to the central software system. Nobody needs to scan by hand, fill in lists or tables, type in data or carry out searches.

The latest changes in status or location are automatically captured by readers and passed on to the central software.



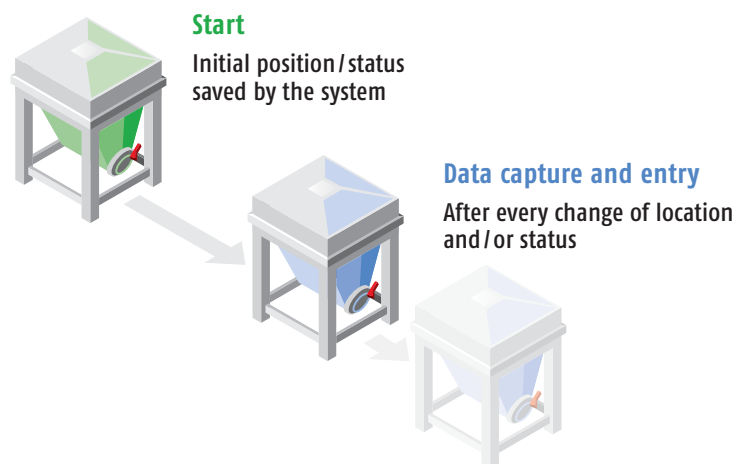


Every movement of a product or container automatically leaves a defined trace in the software, making your processes more transparent and secure and adding an entirely new dimension of reliability to your planning. And lowering your data entry expenses!

Simplify your business – through automatization

Auto ID is the solution of choice whenever movement and change are central to a process. It starts with the initial receipt of the goods and does not end until final delivery – everyone involved in production and/or transportation has to capture and enter data on goods, containers, production materials, etc. And not just once, but over and over again throughout the entire process, because these items frequently change their location and often their status as well. This means that if you want the information in the computer systems to stay up-to-date, new data have to be entered every time there is a change.

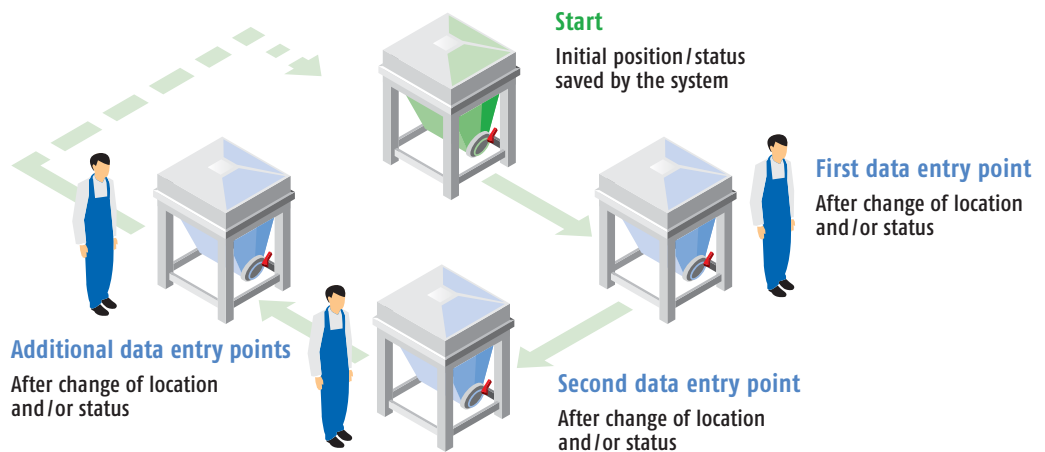
Capturing and entering data ... over and over again throughout the entire process



When the data are captured and entered by hand, this adds up to a lot of time, expense and potential for errors. Or it adds up to secure, well-documented data at minimal effort and cost – when you use Auto ID/RFID.

Save money – through automatization

Capturing and entering data by hand takes a lot of work – and results in high costs



Switching from manual to automatic data entry

Sample calculation

■ Total number of cycles	120,000	Potential savings through automatic entry +180,000 EUR
■ Number of data entry points	10	
■ Cost per entry (incl. handling and corrections)	0.15 EUR	
Data entry costs per year	180,000 EUR	

Return on investment

Projects in which Tagpilot is used for automatic booking show that ROI (return on investment) is achieved after one and a half years at the latest.

The perfect solution for every industry

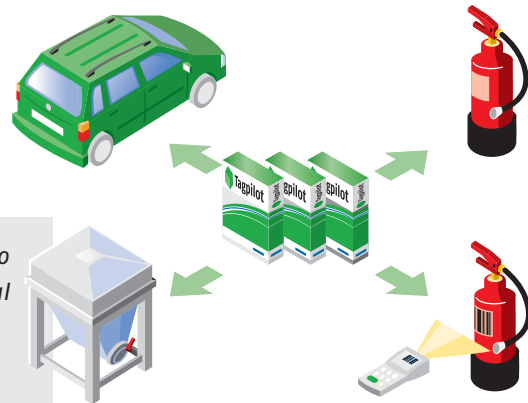
Using **Tagpilot** in combination with an Auto ID technology such as RFID is especially profitable in certain industries. In order to provide the optimal solution for each individual sector, Tagpilot has been preconfigured for:

- ◆ **Vehicle management**
- ◆ **Container management**
- ◆ **Asset management**
- ◆ **Mobile maintenance**

"Using Tagpilot in our RFID projects has allowed us to reduce the cycle times of components in the material flow cycle by up to 70 percent."

Henning Dodenhof

RFID Application Manager, Lufthansa Technik Logistik GmbH



Modeling and analyzing dynamic processes

Why Auto ID software? Why Tagpilot?

Tagpilot is the "brain" of the Auto ID system. Instead of passing on any and all data that has been captured somewhere and at some time, Tagpilot processes and filters the raw data. When you use RFID technology, Tagpilot assigns a transponder number directly to the pallet that is fitted with the transponder, for example. Next, Tagpilot can link the pallet with the materials that have been placed on it. What makes this logic so special is that the materials can always be reliably located, even if it is not possible to read them directly.

Tagpilot does not just scratch the surface. Tagpilot lets you see both the details and the big picture. At all times.

Tagpilot's great advantage lies in the fact that it does not merely detect and document where which material is when. Tagpilot keeps you informed about idle times, cycle times, inventory levels and imminent bottlenecks. If a predefined path is not adhered to or threshold limits are violated, Tagpilot actively informs the person in charge. In short, Tagpilot gives you a knowledge advantage because it can interpret pure movement data. Every single step within your production logistics is transferred to the back end where it can be viewed, analyzed and cleanly documented. Tagpilot does not just scratch the surface. Tagpilot lets you see both the details and the big picture. At all times.

Minimize follow-up costs by using a single system

Why should you choose Tagpilot?

Because Tagpilot drastically reduces follow-up costs that would be unavoidable without it. Tagpilot can be configured – which means that you can incorporate every other Auto ID technology, display other KPIs, define areas differently, modify all of your threshold values or easily make any other change – without expensive additional programming and without losing time. Even data transfer to other systems is no problem for Tagpilot.

Tagpilot can be configured – which means that you can incorporate every other Auto ID technology

In contrast, an individually programmed solution might let you accurately model a certain process – but only one. If you need to use other technologies, because, for instance, GPS data have been included in the process, if the process itself changes, if you want other KPIs or if you need to integrate an entirely different application such as mobile maintenance, your IT department will have to go back to the drawing board.

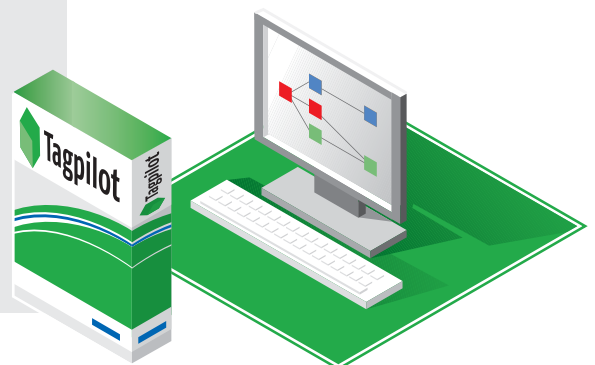
Unless you are using Tagpilot. Tagpilot's technical structure gives you the required flexibility, with device management, middleware and portal applications that work together perfectly. Your IT department will appreciate the fact that Tagpilot is platform and database independent. Tagpilot's "install – configure – use" principle means they can get it up and running quickly and easily.

Install Tagpilot once – reap its benefits for a long time.

It really pays off!

"With our Tagpilot-based Auto ID infrastructure for container management, we can capture all container movements completely automatically. For containers entering the cycle in particular, we have reached 100 percent automatization, which saves us a lot of time and money and guarantees top quality."

Michael Dupont
APP Solids, Boehringer Ingelheim Pharma



Tagpilot at a glance



Functions and features

- ◆ Broad-based device management, middleware and applications in a single system
- ◆ Compatible with Auto ID technologies such as RFID, barcode, dot code, GPS, sensor nodes, etc.
- ◆ Runs under a wide range of different Windows and Unix operating systems
- ◆ Entirely web-based and multilingual front end
- ◆ Alerts delivered by e-mail, SMS and to alert management systems
- ◆ Integrated administration of users, groups and authorizations including connection to LDAP systems
- ◆ Complete integration in existing back-end systems, e.g. SAP
- ◆ Export interface to MS Excel
- ◆ Integrated workflow engine allows individual event handling
- ◆ Software available immediately (install – configure – use)
- ◆ Process logic configurable via rule engine, workflow engine and event management
- ◆ Open, documented interfaces for a wide variety of different functions
- ◆ Integrated visualization via areas and three-dimensional positions incl. Google Earth connection
- ◆ Process optimization through freely configurable identification of KPIs



If you would like to learn more about how your processes might benefit from an Auto ID solution with Tagpilot, we would be happy to advise you. Following precisely defined steps, our Auto ID consulting team will work with you to develop a concept for your personalized solution.

Please contact: questions.tagpilot@silverstroke.com





- ◆ **Simplifies data capture and entry for goods, containers and production materials**
- ◆ **Automatization cuts the costs of data capture and entry**
- ◆ **Creates transparency and reliability and makes it easier to plan**
- ◆ **Provides information on idle times, cycle times, inventory levels and imminent bottlenecks**
- ◆ **Makes each individual step of your production logistics visible, analyzable and documentable**

Silverstroke
Solutions you can rely on

Silverstroke GmbH

Ludwig-Erhard-Straße 2
76275 Ettlingen
Germany

Tel: +49-(0) 72 43-3 46-0

Fax: +49-(0) 72 43-3 46-12 79

www.silverstroke.com